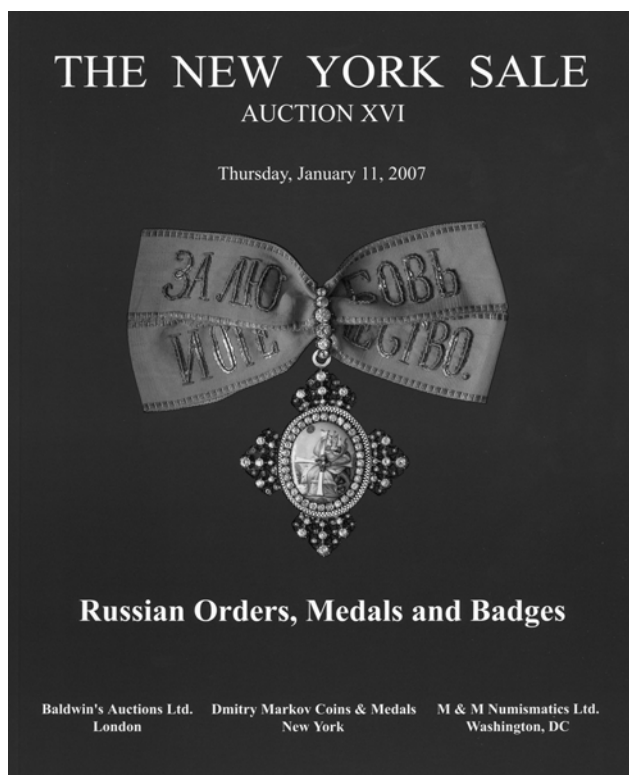


Baldwin's Auctions Ltd
London

Dmitry Markov Coins & Medals
New York

M & M Numismatics Ltd
Washington



PRICES REALISED

THE NEW YORK SALE XVI

Thursday, January 11, 2007

Total Prices Realized: US\$ US\$1,004,467

(Including 15%\$ buyers premium)

1501	\$80,000	1515	\$350	1529	\$475	1543	\$6,500	1557	\$475
1502	\$12,000	1516	\$550	1530	\$900	1544	\$600	1558	\$325
1503	\$80,000	1517	\$450	1531	\$425	1545	\$1,100	1559	\$15,000
1504	\$3,500	1518	\$625	1532	\$120	1546	\$2,200	1560	\$160
1505	\$1,300	1519	\$4,250	1533	\$425	1547	\$9,000	1561	\$1,300
1506	\$6,250	1520	\$1,000	1534	\$3,000	1548	\$600	1562	\$2,600
1507	\$400	1521	\$850	1535	\$3,250	1549	\$500	1563	\$9,000
1508	\$1,050	1522	\$700	1536	\$1,600	1550	\$2,000	1564	\$1,900
1509	\$35,000	1523	\$850	1537	\$1,200	1551	\$2,800	1565	\$8,000
1510	\$8,500	1524	\$35,000	1538	\$3,250	1552	\$4,250	1566	\$300
1511	\$7,750	1525	\$3,250	1539	\$4,200	1553	\$15,000	1567	\$160
1512	\$625	1526	\$2,200	1540	\$1,600	1554	\$450	1568	\$100
1513	\$500	1527	\$2,400	1541	\$8,000	1555	\$1,500	1569	-
1514	\$1,100	1528	\$17,000	1542	\$950	1556	\$150	1570	\$1,200

1571	\$1,200	1632	\$950	1693	-
1572	\$450	1633	\$850	1694	\$1,300
1573	\$140	1634	\$425	1695	\$3,400
1574	\$130	1635	-	1696	\$850
1575	\$120	1636	\$360	1697	\$240
1576	-	1637	\$3,000	1698	\$200
1577	\$900	1638	-	1699	\$850
1578	\$150	1639	\$350	1700	\$400
1579	\$300	1640	\$1,600	1701	\$1,300
1580	\$325	1641	\$2,600	1702	\$640
1581	\$220	1642	\$575	1703	\$1,500
1582	\$2,600	1643	\$160	1704	\$900
1583	\$260	1644	\$400	1705	\$2,200
1584	\$35,000	1645	\$425	1706	\$2,200
1585	\$2,000	1646	\$775	1707	\$1,500
1586	\$1,200	1647	\$1,100	1708	\$575
1587	\$120	1648	\$110	1709	\$1,700
1588	\$160	1649	\$190	1710	\$2,000
1589	\$1,000	1650	\$200	1711	\$1,000
1590	\$220	1651	\$120	1712	\$475
1591	\$850	1652	\$1,200	1713	\$1,300
1592	\$325	1653	\$800	1714	\$180
1593	\$650	1654	\$18,000	1715	\$200
1594	\$140	1655	\$16,000	1716	\$220
1595	\$60	1656	\$4,800	1717	-
1596	\$120	1657	\$850	1718	\$1,300
1597	\$60	1658	\$425	1719	\$1,000
1598	\$6,000	1659	\$14,000	1720	\$1,000
1599	\$2,800	1660	\$5,250	1721	\$1,100
1600	\$1,300	1661	\$18,000	1722	\$3,000
1601	\$190	1662	\$450	1723	\$1,300
1602	\$65	1663	\$5,500	1724	\$1,000
1603	\$475	1664	\$775	1725	\$700
1604	\$160	1665	\$3,250	1726	\$1,100
1605	\$300	1666	\$2,400	1727	\$950
1606	\$325	1667	\$2,200	1728	\$850
1607	\$275	1668	\$7,250	1729	\$850
1608	\$1,200	1669	\$2,400	1730	\$950
1609	\$450	1670	\$3,500	1731	\$1,000
1610	\$160	1671	\$17,000	1732	\$1,100
1611	\$500	1672	\$1,900	1733	\$1,600
1612	\$280	1673	\$50,000	1734	\$900
1613	\$60	1674	\$30,000	1735	\$800
1614	\$480	1675	\$1700	1736	\$1,500
1615	\$550	1676	\$3750	1737	\$240
1616	\$1,000	1677	\$900		
1617	\$120	1678	\$8,000		
1618	\$375	1679	\$6,500		
1619	\$350	1680	\$67,500		
1620	\$750	1681	\$7,500		
1621	\$480	1682	\$1,400		
1622	\$1,200	1683	\$1,200		
1623	\$1,000	1684	\$850		
1624	\$4,500	1685	\$575		
1625	\$150	1686	\$575		
1626	\$260	1687	\$575		
1627	-	1688	\$130		
1628	\$240	1689	-		
1629	\$375	1690	-		
1630	\$900	1691	\$700		
1631	\$700	1692	\$3,000		